

Winlet 2200 T Bi-Leveling



Pat. Pending

TRACKED CARRIER » ALL TERRAIN MANEUVERABLE » DYNAMIC LEVELING OF MANIPULATOR » EXTREME STABILITY » MORE SAFETY » SATISFIED EMPLOYEES » FASTER INSTALLATION

The Winlet 2200T Bi-Leveling is a "state-of-the-art" machine distinguished by achieving all terrain maneuverability as well as having dynamic leveling of the complete manipulator on both horizontal axis.



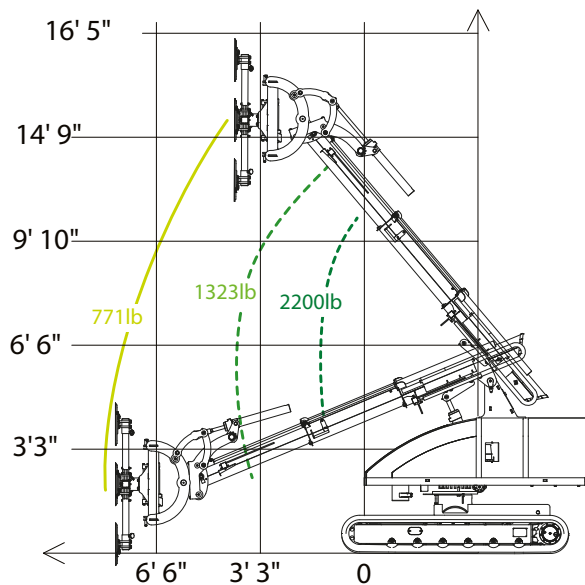
TRACTION AND LOW GROUND PRESSURE

The Winlet 2200T Bi-Leveling can operate on all different types of terrain, on stairs etc., ensuring the maximum maneuverability and precision even in the narrowest spaces, with the minimum ground pressure - and without any outriggers needed at any time.

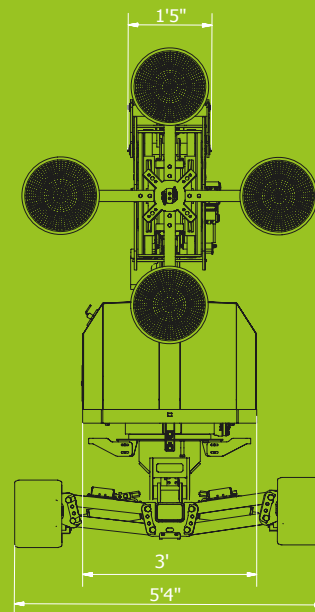
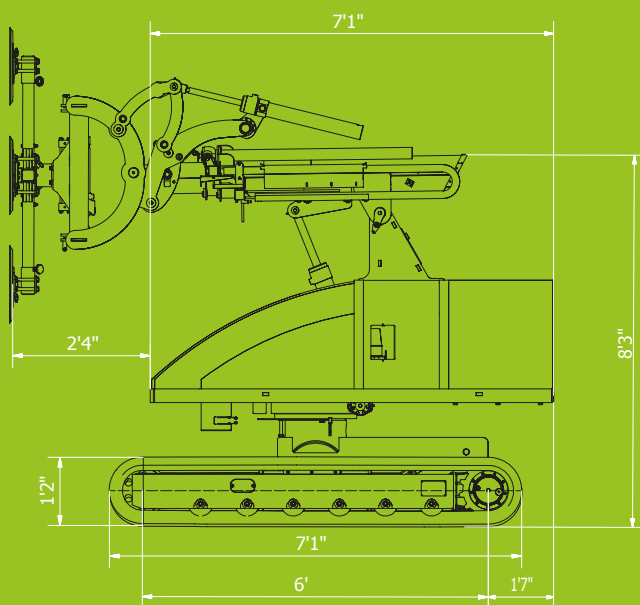
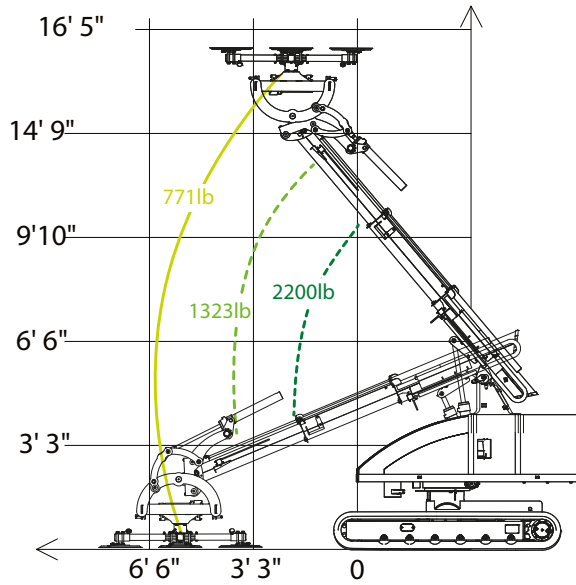
DYNAMIC LEVELING

The leveling of the manipulator is completely automatic when using the Dynamic Leveling System even on slopes or uneven surfaces. The Winlet 2200T Bi-Leveling will automatically adjust both on longitudinal slopes up to 15° (27%) and lateral slopes up to 14° (25%) at the same time, always ensuring a safe and effective transportation or installation.

REACH DIAGRAM



PICKUP AND PLACE DIAGRAM



SPECIFICATIONS

EXTERNAL LENGTH	9' 5"
EXTERNAL WIDTH	4' 9" - 5' 4"
MAX. LIFTING CAPACITY	2200 lb
MAX. LIFTING HEIGHT - Raised carrier	14' 9"
MAX. LIFTING HEIGHT - Lowered carrier	13' 9"
MAX. OVERHEAD INSTALLATION	
Raised carrier	16' 9"
MAX. OVERHEAD INSTALLATION	
Lowered carrier	15' 9"
MAX. REACH - No tilt on carrier	7' 3"
MAX. REACH - Carrier tilted forward	8' 6"
MAX. SPEED	1.36 mph
TOTAL WEIGHT - excl. counterweights	5732 lb
TOTAL WEIGHT - incl. counterweights	6172 lb
BATTERIES	48V, 180AH

